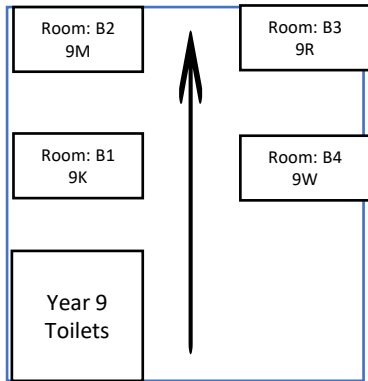




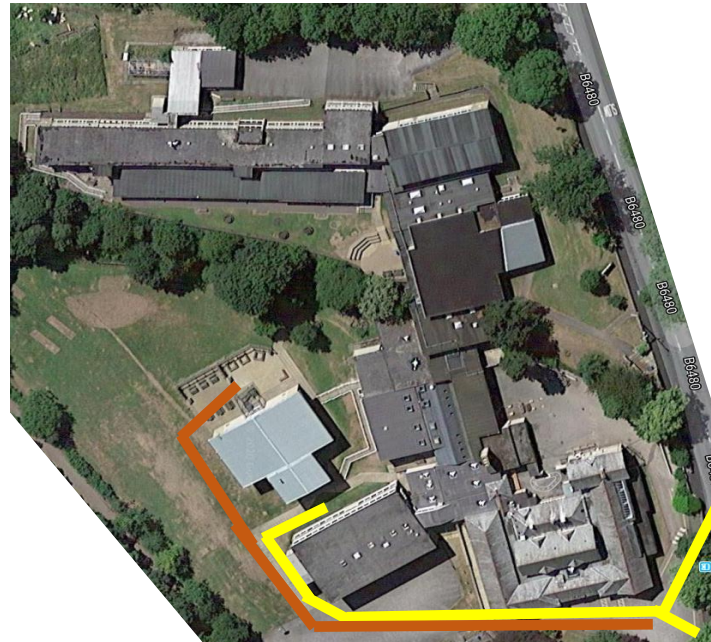
### Year 9 Key Maps

#### Year 9 Room Location: Bradley building, ground floor



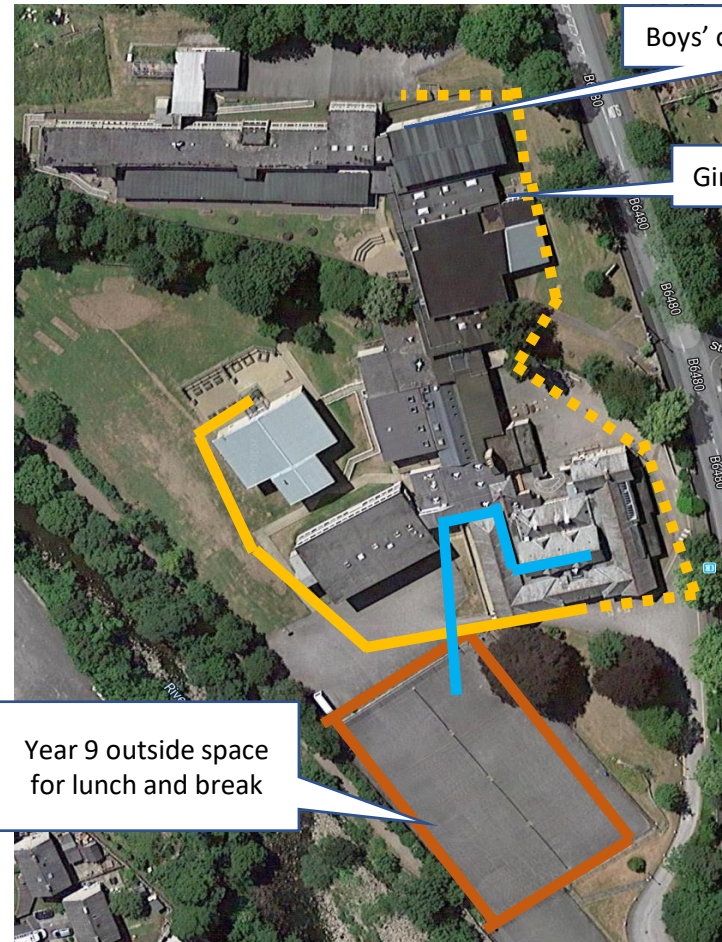
- Key points:**
1. Enter the building via the main two doors at the front
  2. Exit the building via the fire door at the opposite side

#### Route for start and end of school



**Key point:**  
All Year 9 students must go past the canteen entrance, through the staff carpark to the Bradley building. Follow the orange line at the end of school.

#### Route for canteen and PE changing rooms



Boys' changing rooms

Girls' changing rooms

Year 9 outside space for lunch and break

**Key point:**  
Follow the dotted line to the PE changing rooms. Follow the full yellow line to access the canteen. Follow the blue line to the outside area.