

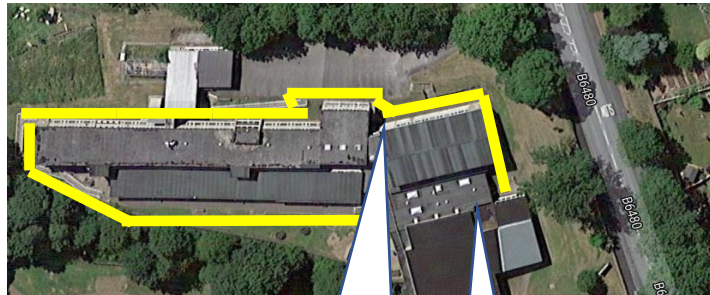


Year 8 Key Maps

Year 8 Room Location

T5: 8K 8US	T4: 8M 8UC	T3: 8R 8UL	T2: 8W1 8UT	T1: 8W2 8UE
------------------	------------------	------------------	-------------------	-------------------

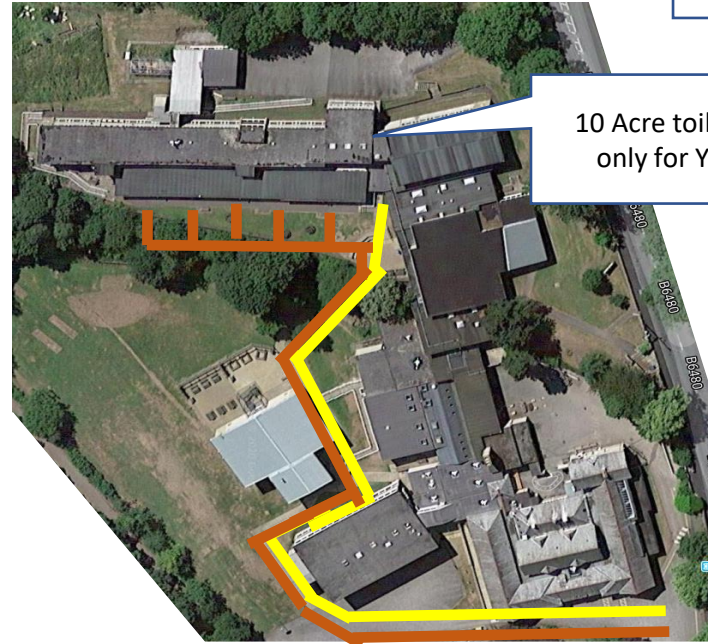
Route for PE Changing Rooms



Boys' changing rooms

Girls' changing rooms

Route for start and end of school including Year 8 toilets

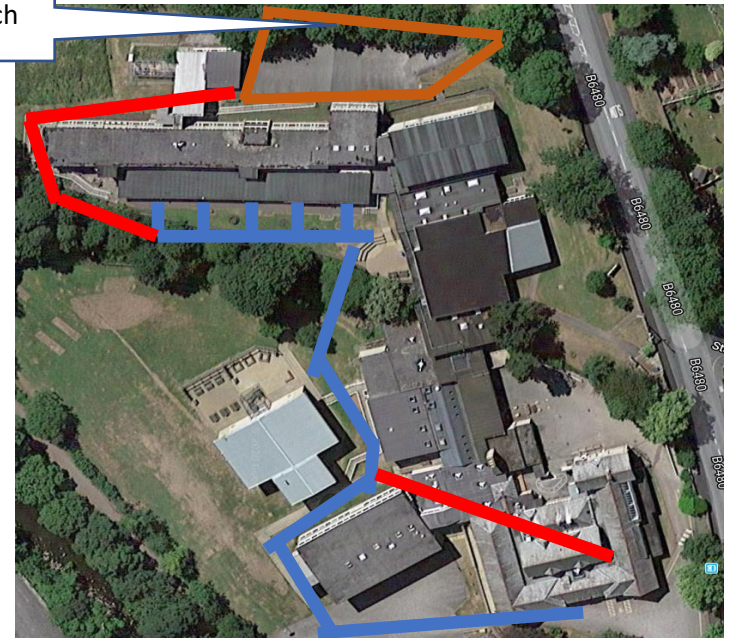


10 Acre toilets are only for Year 8

- Key points:**
1. Enter and exit the building via the classroom door (orange line)
 2. During break and lunch, enter the toilets via the Student Service outside door.

Route for canteen

Year 8 outside space for break and lunch



Key points:

1. Exit the building via the classroom (blue route)
2. When food has been collected, students to make their way back to their outside space via reception in door (red line). Then onto the blue line to travel back onto the second red line to the outside space.