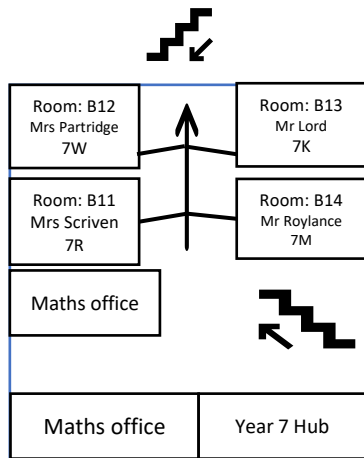


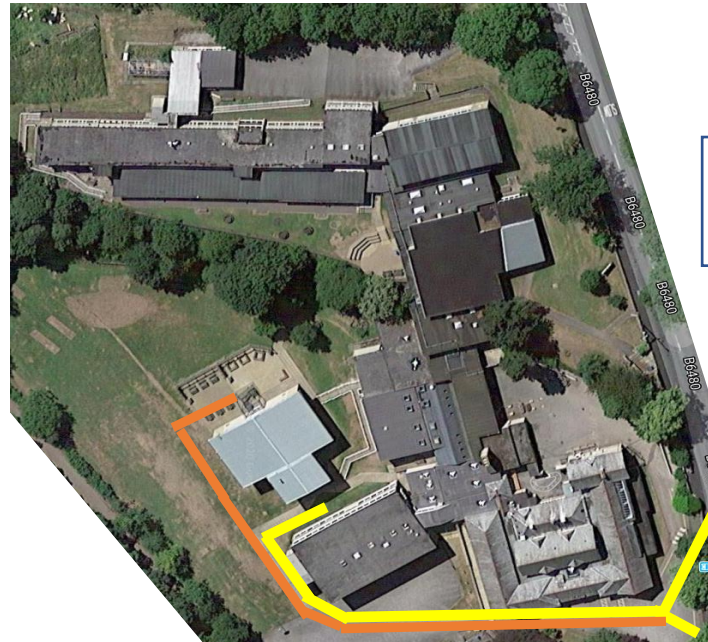


## Year 7 Key Maps

### Year 7 Room Location: Bradley building, first floor

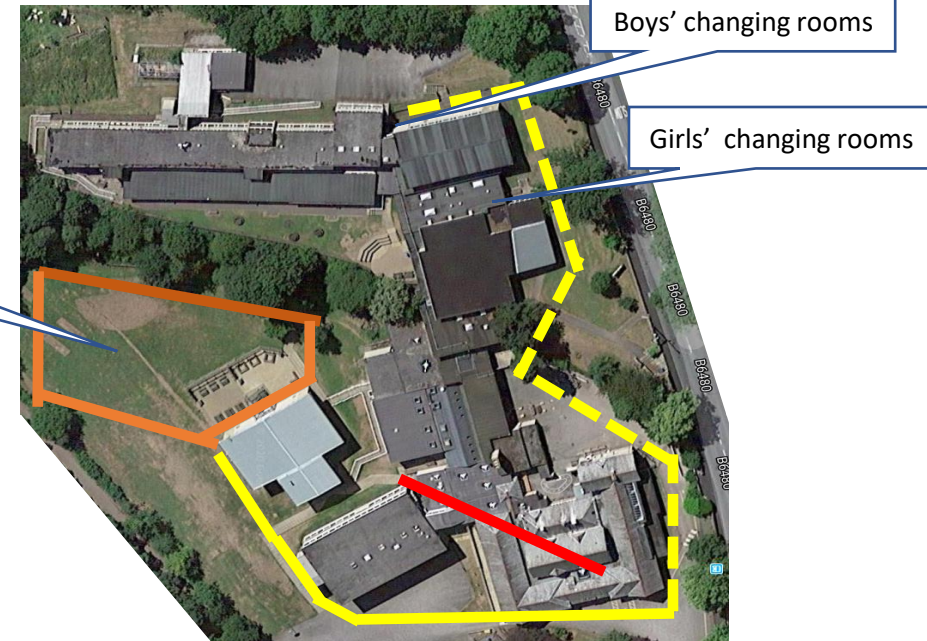


### Route for start and end of school



**Key point:**  
All Year 7 students must go past the canteen entrance, through the staff carpark to the Bradley building. Follow the orange line at the end of school.

### Route for canteen and PE changing rooms



**Key points:**

1. Leave for the canteen via the fire exit doors in the Bradley building.
2. When food has been collected, students to make their way back to their outside space via reception in door (red line).
3. The PE route is all external with changing facilities in different locations

Year 7 outside space for break and lunch

**Key points:**

1. Enter the building via the main two doors at the front
2. Exit the building via the fire door at the top of the building